

How to Setup an ODBC Connection with CYMA

ODBC is a data connection in Windows that can be used to access CYMA/Pervasive data and insert data into reports. Commonly, Microsoft Query is used to create Excel sheets, but a wide variety of products can use ODBC.

Microsoft Query is:

- A Query tool for accessing different types of data structures
- A “Subset” of Access
- A resource that pulls information from the source data into an Excel spreadsheet

Why Use It with CYMA?

To supplement use of F9 and/or Crystal Reports

To easily query the database without writing complex reports

To easily connect data structures that are not normally connected in standard CYMA reports

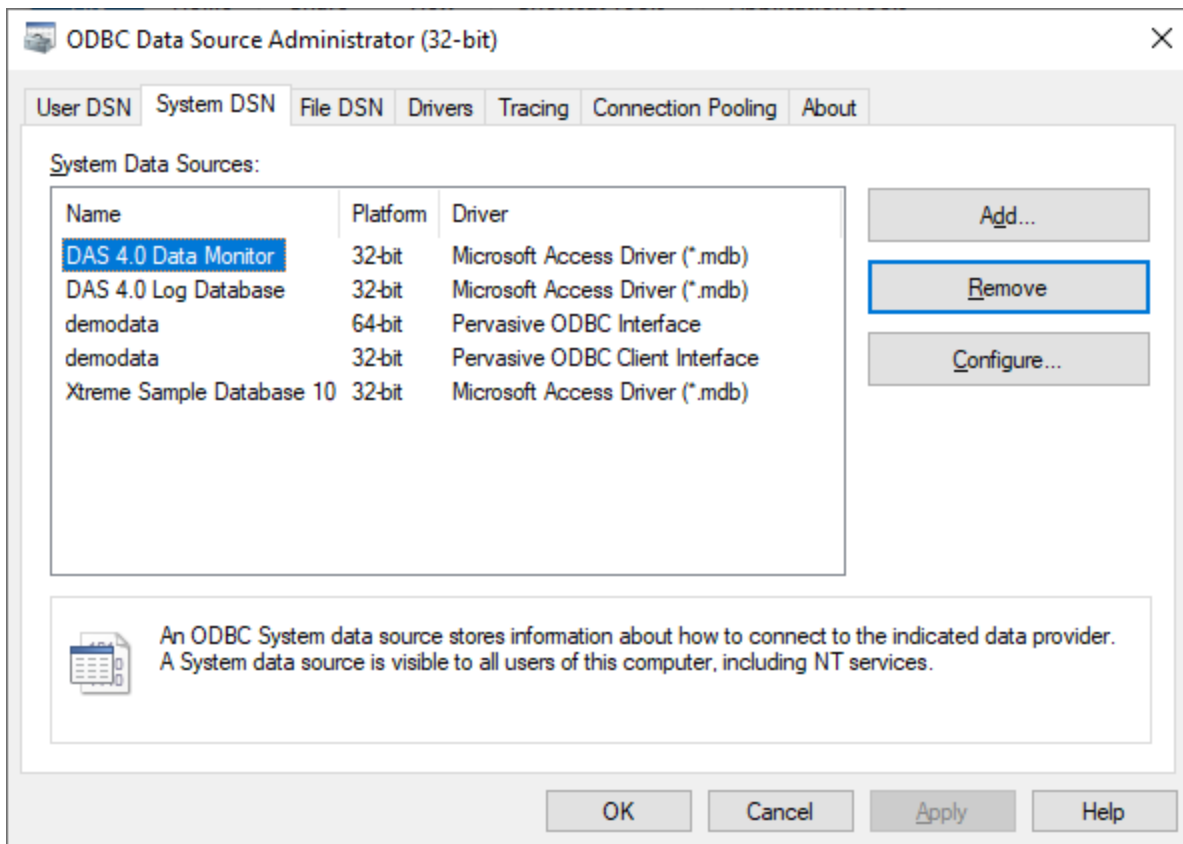
To develop “push button” management reporting tools

IMPORTANT NOTE AND DISCLAIMER: Caution should be taken using ODBC. Depending on setup, product used for accessing the data, and other circumstances you may have the ability to alter the data directly in the database. If given the option, you should choose to copy the data into your product before creating queries. **Always maintain a nightly backup of your data.** CYMA accepts no responsibility from using ODBC in use with CYMA data. If you have any questions or concerns, contact CYMA at 800-292-2962.

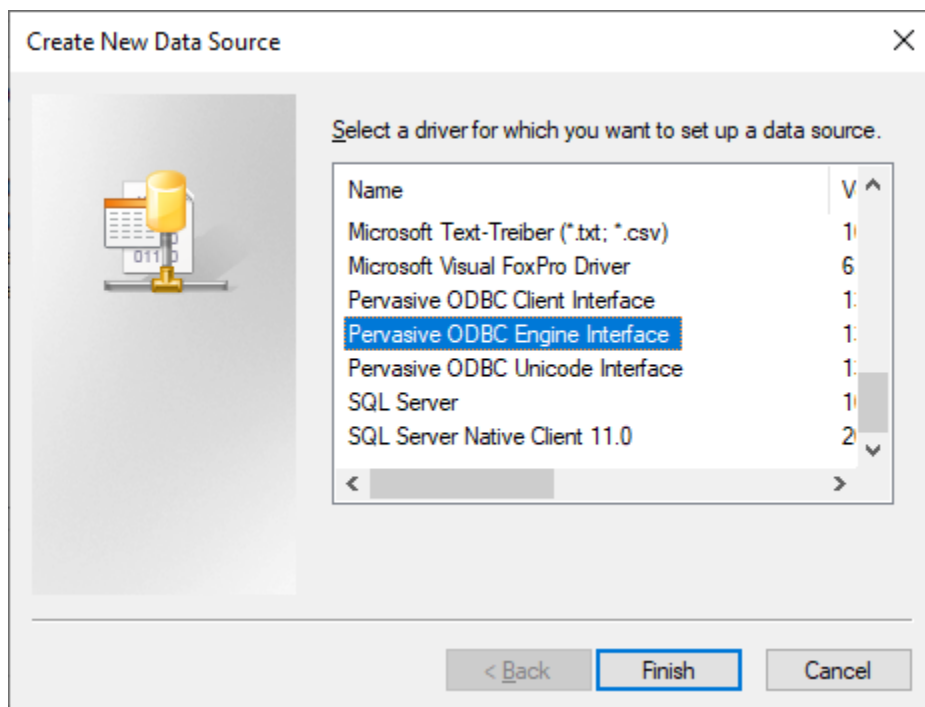
Setup ODBC at the Full / Server Installation

This section will show how to create an ODBC connection for Pervasive Engine (Actian) which can be used to pull data source records into various products (Microsoft Query, Excel, Access, etc).

- Open Control Panel - Administrative Tools - **ODBC Data Sources (32-Bit)**
- Access the **System DSN tab**



- Select Pervasive ODBC Engine Interface (*contact CYMA for the Client Interface instructions*)



In the connection setup it is advised to use the name of the company data set so that we can keep track of where the data originates. The Data Source Name should be unique. The drop down list "Database Name" is a dynamically generated list of companies in CYMA ("CYMA" + CompanyID)

- Data Source Name
- Database Name

Pervasive 32-bit ODBC Engine DSN Setup

Data Source Name:

Description: Pervasive ODBC Engine Interface

Connection Attributes

Database Name:

Buttons: OK, Cancel, Test, Help, Advanced..., Create...

Once the Data Source Name has been specified and the Database Name selected, choose Test to verify and OK to finalize the process.

Pervasive 32-bit ODBC Engine DSN Setup

Data Source Name: CYMA

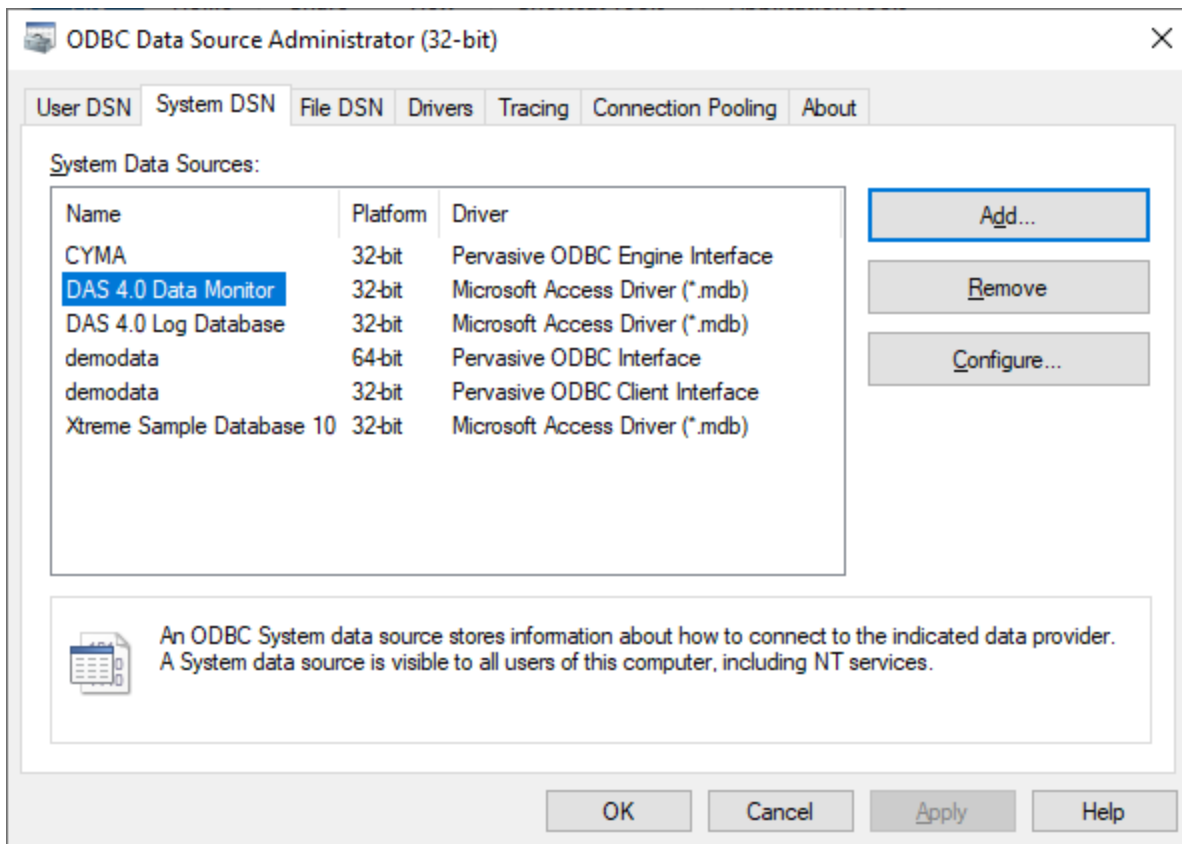
Description: Pervasive ODBC Engine Interface

Connection Attributes

Database Name: CYMADEMO

Buttons: OK, Cancel, Test, Help, Advanced..., Create...

Click on the OK button. You will now see that you have a Data Source available in the screen below.



Establishing a Client Connection

If CYMA is located at a server, a 32 bit ODBC connection should be established at the server using the instructions in the section above. A workstation can also connect to the ODBC at the server (provided proper permissions are enabled **AND** a Pervasive ODBC Interface is established at the server). Contact CYMA for more specific instructions to setup an ODBC connection from a CYMA Workstation.

Using ODBC to pull CYMA Data into Access, Excel, or another Third Party Product

CYMA Consulting is happy to assist you with accessing CYMA data using an ODBC connection. You can also review documentation online regarding Microsoft Query and Access queries using CYMA data – please note the disclaimer at the top of this article.